

Perfect Protection

Locpro

My beloved family, my sweet home
Your choice protects Belongings.

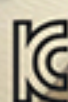
Digital Doorlock K500 Series



K500B3



K500B3C



Smart Function! Easy open! Digital Doorlock K500 Series



Smart touch

- Sensible LED Blue Lighting
- High Sensitive Touch Pad



Strong Durability

- Diecasting Material
- Front One-Piece Touch Screen



Fire Detection

- Fireproof Structure Design
- High Temperature Alarm System



Smart Function

- Passcode Hide Feature
- One-Push Anti-Panic



More Smart! More Safe! Simple & Dynamic Design!

Locpro

Specification



• K500 Series

Type	2way : Passcode, RF Tag 3way : Passcode, RF Tag & Mechanical Key
Weight	4.3kg (Including package)
Operating Temperature	-20°C ~ 60°C
Dimension	Outbody 84(W) x 385(H) x 82(D) Inbody 84(W) x 382(H) x 82(D)
Emergency Battery	Alkaline 9V, 6LF22(Optional)
Color	Chrome Silver, Champagne Gold

• K500F Series

Type	4way : Passcode, RF Tag Fingerprint & Mechanical Key
Weight	4.3kg (Including package)
Operating Temperature	-20°C ~ 60°C
Dimension	Outbody 84(W) x 385(H) x 82(D) Inbody 84(W) x 382(H) x 82(D)
Emergency Battery	Alkaline 9V, 6LF22(Optional)
Color	Chrome Silver, Champagne Gold



Fire Detection Function

In case of sensing high temperature over 60°C, it alarms and activates door-open function.



Prank Prevention Function

Incorrectly entering the passcode the five times or more, the doorlock does not operate for 3 minutes.



Easy installation without additional hole.

Not necessary to drill additional hole. Install doorlock just using by existing hole on the door.



Passcode Hide Function

Use the fake number and the actual passcode together whenever there is any chance of exposing the passcode to others.



Door Open by Wireless Connect (Option)

Locpro Doorlock can connect home network system to control the door.



Anti-Panic of One-Push way

In the event of an emergency, such as a fire, the anti-panic feature enables residents a quick and safe evacuation by pushing the handle.



Smart Touch Pad

With the sensible LED and high-quality touch screen, the key pad cover can be utilized easily without having to open it. Every time the user touch the key, it blinks.



Durability of Strong Material

Considering durability and safety the best, it uses the Diecasting material resistant to fire or physical force.



Fire Detection Function

In case of sensing high temperature over 60°C, it alarms and activates door-open function.



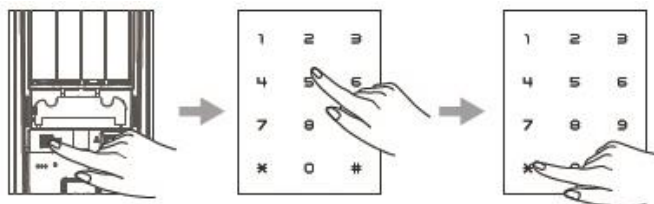
Prevention of electronic shock & static

To prevent illegal entrance using the electric & electronic shock, the superior circuit blocks the impact.

● K500 系列

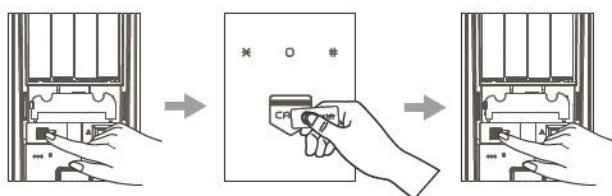


一、密碼設定



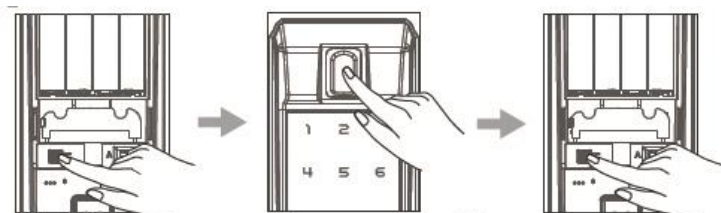
1. 打開電池盒後在左下角有『S』按下設定鍵。
2. 按密碼設定 4-13 碼。
3. 再按『*』鍵，即設定完成。

二、卡片設定



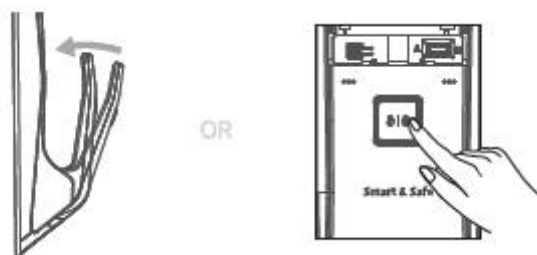
1. 打開電池盒後在左下角有『S』按下設定鍵。
2. 用 RF 感應卡或(無晶片)悠遊卡，在感應處感應，最多可以設定 50 張。
3. 再按『S』鍵，即設定完成。

三、指紋設定



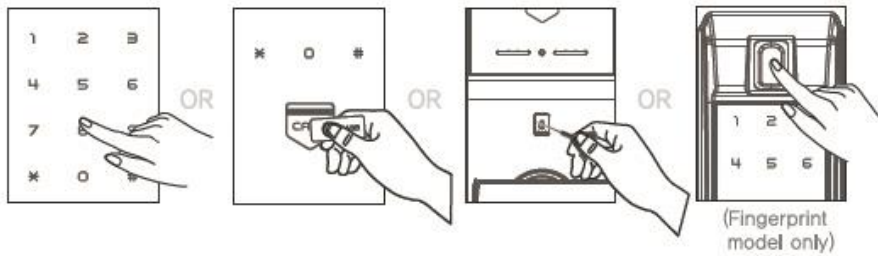
1. 打開電池盒後在左下角有『S』按下設定鍵。
2. 把要設定的手指指紋，放在指紋感應處，連續 4 次，即可完成。
3. 再按『S』鍵，即設定完成。 PS:可設定 100 枚指紋。

四、門後開鎖方式



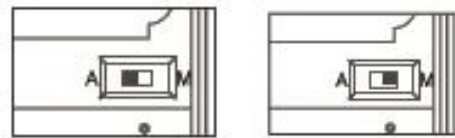
1. 於電子鎖背面按『OPEN』鍵。
2. 或 推手把開門。

五、門前開鎖方式



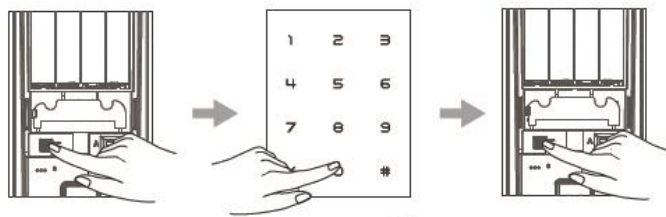
- 1.輸入密碼。
- 2.卡片感應。
- 3.鑰匙開鎖。
- 4.指紋感應。

六、自動/手動上鎖方式



- 1.打開電池盒。
- 2.選至『A』為自動上鎖。
- 3.或選至『M』為手動上鎖。

七、刪除所有設定方式



- 1.打開電池盒後在左下角有『S』按下設定鍵。
- 2.按『0』設定鍵。
- 3.按『S』設定鍵。
- 4.刪除所有卡片、及指紋設定。

*請定期更換電池，以免電池漏液，造成機板損壞。

*請使用 3 號鹼性電池。

*有任何問題，歡迎來電洽詢：



飛波電子股份有限公司
FEI PO ELECTRONICS CO.,LTD
地址:新北市中和區板南路671號12樓

TEL:02-8221-5868
FAX:02-8228-6396
<http://www.feipo.com.tw>
E-MAIL: david@feipo.com.tw